

BRISTOL

SUPERIOR BUILDERS INC.

502-762-9196



FRONT ELEVATION "A"



NO VAULT BR#3



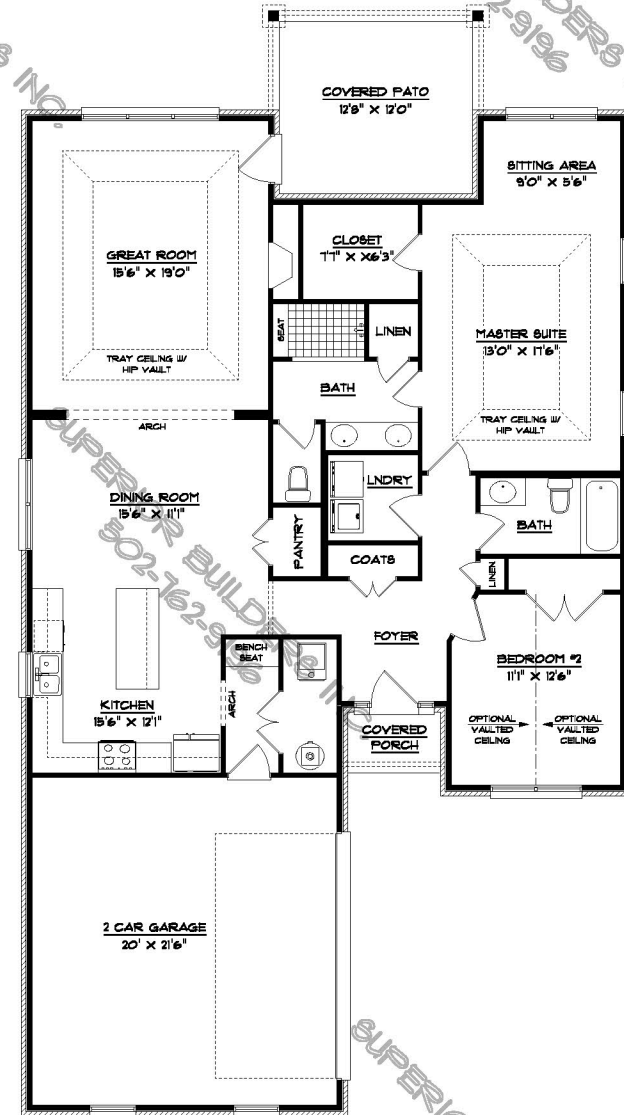
FRONT ELEVATION "B"



NO VAULT BR#3



REAR ELEVATION



FLOOR PLAN

1,671 SQ.FT.

All drawings and floor plans are artist's concepts and are subject to change without notice. All dimensions are approximate. Pictures may reflect certain options and or changes from plans. This presentation is not part of a legal contract.

PHOENIX

SUPERIOR BUILDERS INC.

502-762-9196



FRONT ELEVATION "A"



NO VAULT BR#3



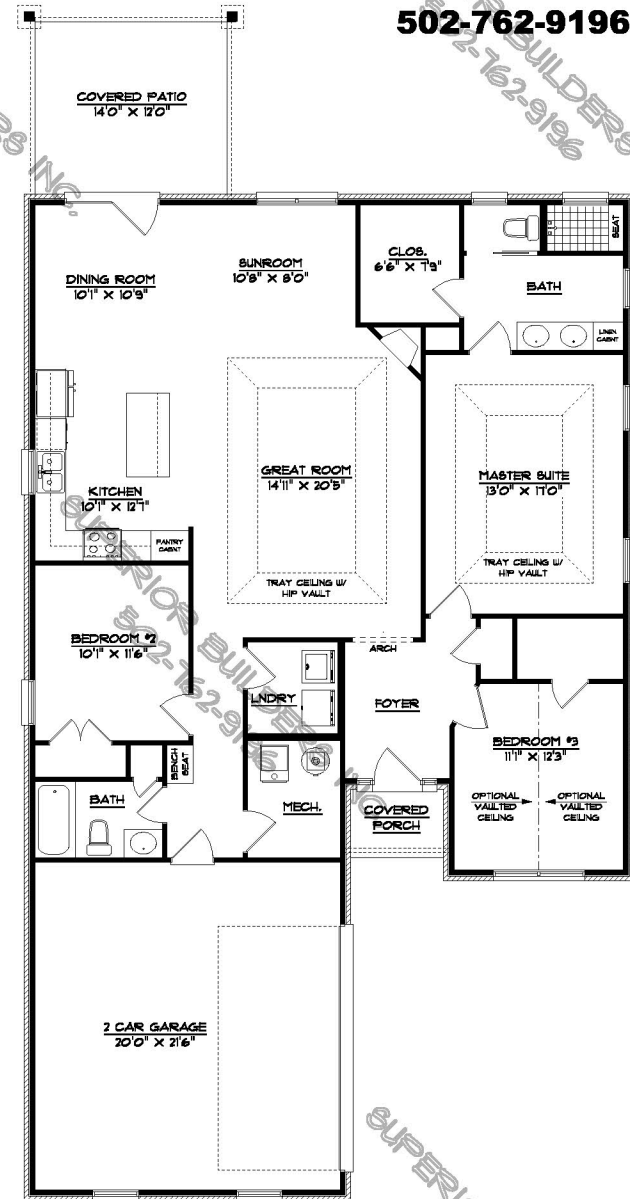
FRONT ELEVATION "B"



NO VAULT BR#3



REAR ELEVATION



FLOOR PLAN

1,135 SQ.FT.

All drawings and floor plans are artist's concepts and are subject to change without notice. All dimensions are approximate. Pictures may reflect certain options and or changes from plans. This presentation is not part of a legal contract.

RALEIGH

SUPERIOR BUILDERS INC.

502-762-9196



FRONT ELEVATION "A"



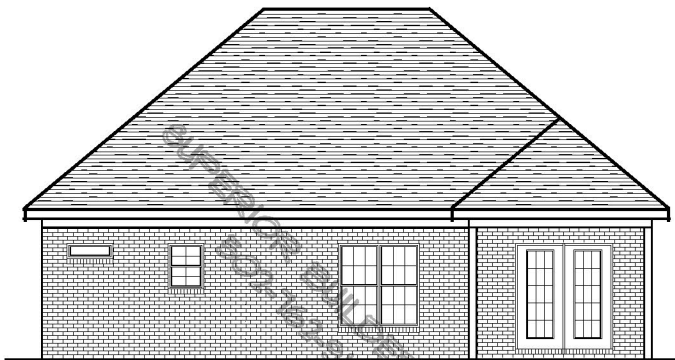
NO VAULT BR#3



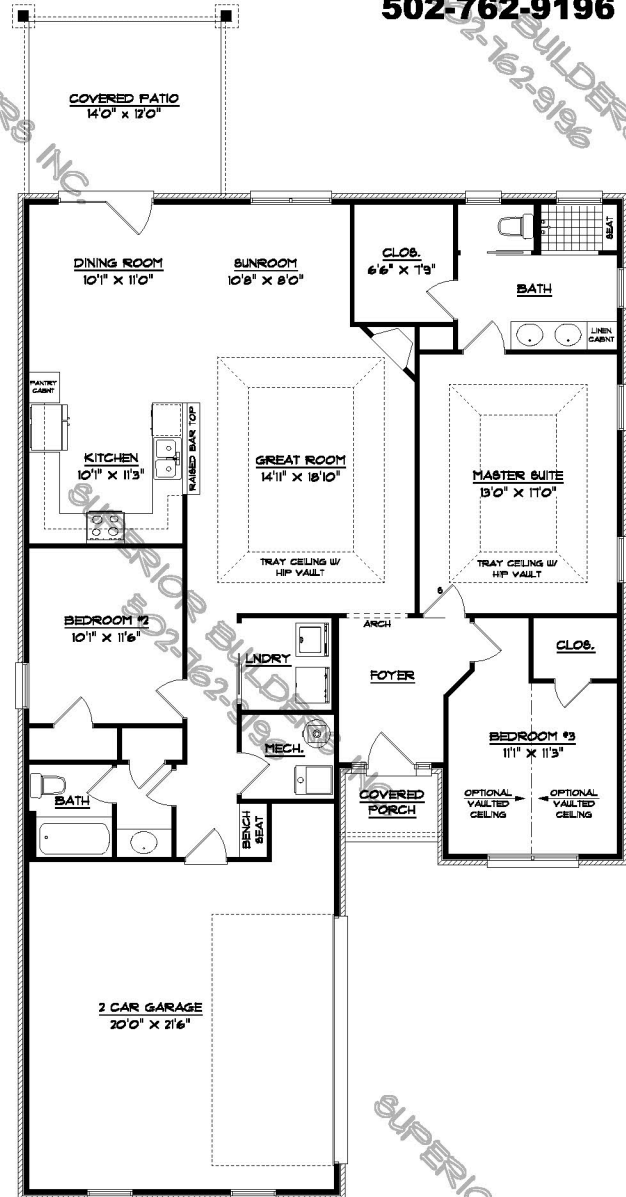
FRONT ELEVATION "B"



NO VAULT BR#3



REAR ELEVATION



FLOOR PLAN

1,100 SQ.FT.

All drawings and floor plans are artist's concepts and are subject to change without notice. All dimensions are approximated. Pictures may reflect certain options and or changes from plans. This presentation is not part of a legal contract.

VIRGINIA

SUPERIOR BUILDERS INC.

502-762-9196



FRONT ELEVATION "A"



NO VAULT BR#3



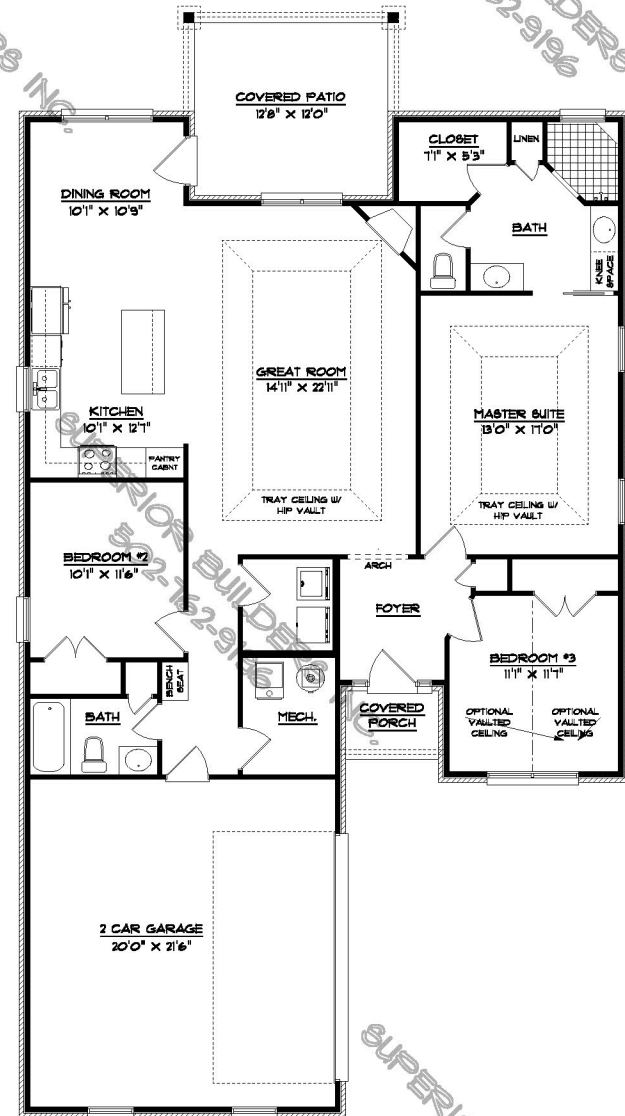
FRONT ELEVATION "B"



NO VAULT BR#3



REAR ELEVATION



FLOOR PLAN

1,650 SQ.FT.

All drawings and floor plans are artist's concepts and are subject to change without notice. All dimensions are approximate. Pictures may reflect certain options and or changes from plans. This presentation is not part of a legal contract.